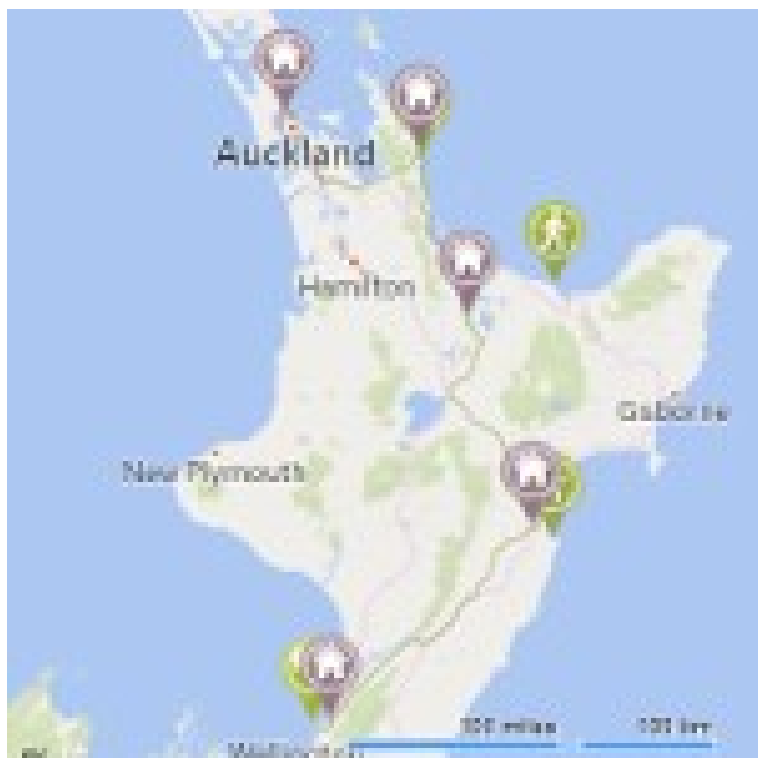


Wild Collection

Birds of the North

This journey is a birders' epic? A guided walk with legendary conservationist, volcanic island sanctuary, gannet colony, kiwis at the National Birding Centre and finally a trip to Kapiti Island where you encounter Maori culture and stories whilst visiting this very special island reserve...



At a glance

Duration: 11 days, 10 nights

Connection points:

Auckland airport
Wellington airport or Inter Islander ferry

Activity level: moderate

Best season: October-April

Driving times

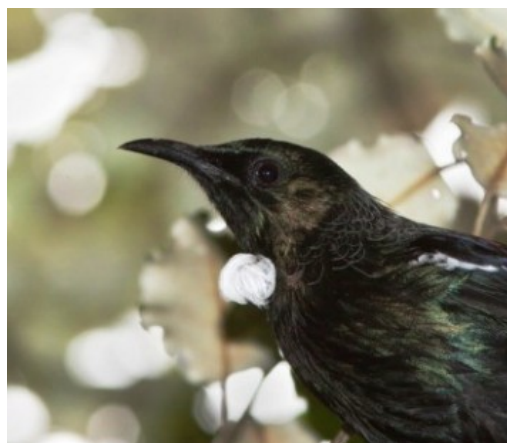
Auckland - Tairua: 2 hours
Tairua - Rotorua: 2 1/2 hours
Rotorua? - Napier: 2 1/2 hours
Napier - Kapiti Coast: 3 hours
[allow 1 hour to detour via Mt Bruce]
Kapiti Coast - Wellington: 1 hour



BIRDS OF THE NORTH

A birder's paradise

North Island



Day 1 - Albany, Auckland

Stay [Warblers Retreat](#)

Relax in the 5 acre gardens at Warblers Retreat listening to native birdsong from your outdoor bath.

Day 2 - Albany, Auckland

Stay [Warblers Retreat](#)

Get out to Tiritirimatangi Island bird sanctuary, boats leave from Gulf Harbour pier Wednesday to Sunday, or drive to Murawai Beach and visit the gannet colony and the lovely beaches of west Auckland.

Day 3 - Tairua, Eastern Coromandel

Stay [Colleith Lodge](#)

The scenic drive from Auckland takes you past Miranda Shorebird Centre before arriving at the seaside town of Tairua. There are 3 good dining options in this little town.

Day 4 - Waihi & North Island

Multi-day [Kiwi Dundee Adventures](#)

Day 5 - Tairua, Eastern Coromandel

Stay [Colleith Lodge](#)

After breakfast at the huge conservatory table looking out to sea, Jan and Doug from Kiwi Dundee will pick you up and take you for a day of discovery. Active conservationists, keen botanists and fountains of knowledge; you will have a great day.

Day 6 - Rotorua, Central Plateau

Stay [Koura Lodge](#)

Your drive brings you to Koura Lodge on Rotorua's lakefront. Relax and borrow one of the lodge's kayaks or take in an evening Maori cultural show.

Day 7 - Rotorua, Central Plateau

Do [White Island Tours | White Island & Moutohora Island](#)

Stay [Koura Lodge](#)

Select either the White Island Tour to explore this active island volcano or Moutohora (Whale Island) Tour - a dormant volcano five nautical miles off Whakatane - is a wildlife sanctuary, providing refuge for endangered birds (including kiwi) and plants.

Return to Koura Lodge.

Day 8 - Napier, Hawke's Bay

Stay [Breckenridge Lodge](#)

Your next stop is Napier, Art Deco capital of New Zealand. Your host will recommend the best restaurants or winery cafes for dinner tonight.

Day 9 - Napier, Hawke's Bay

Do [Gannet Safaris Overland](#) | [Gannet Safari](#)

Stay [Breckenridge Lodge](#)

The Cape Kidnapper Gannet colony is only accessible by minibus or private tour. Get amongst these beautiful birds and share the magnificent views.

Keen golfers may like to fit in a round of golf at Cape Kidnappers Golf Course this afternoon.

Wine lovers may enjoy a Twilight Odyssey which is a progressive dinner visiting several Hawkes Bay wineries

Day 10 - Peka Peka Beach, Kapiti Coast

Stay [Atahuri Lodge](#)

The drive from Napier to the Kapiti Coast is 3 hours. A 30 minute detour will take you to Pukaha Mt Bruce national wildlife centre where you can see kiwis and other native species such as tuatara, kokako and takahe and conservation in action.

Day 11 - Kapiti Island, near Wellington

Multi-day [Kapiti Island Nature Tours](#)

Day 12 - Peka Peka Beach, Kapiti Coast

Stay [Atahuri Lodge](#)

Kapiti Island is a very special predator-free island reserve. Strictly limited numbers are allowed on the island each day to encounter native birds and hear Maori stories of the area.

Day 13 - Journey's End

Leave this itinerary in Wellington, either taking a domestic flight, a flight to Australia or the ferry to the South Island.